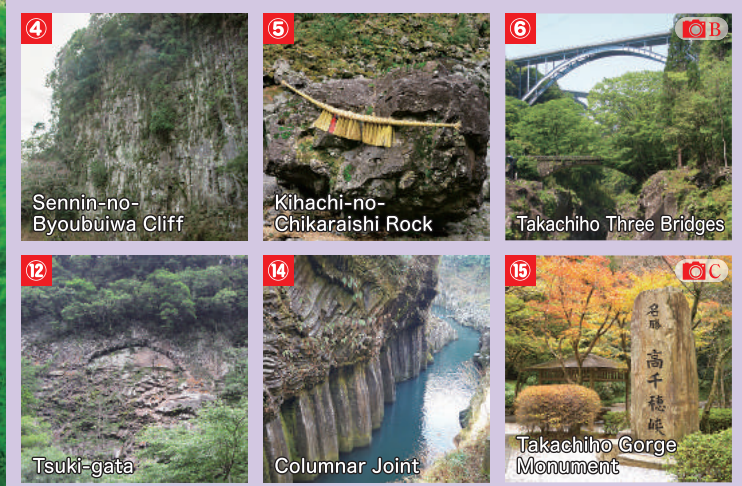


Takachiho Gorge Guide Map



Takachiho Kagura Dance
◆ Fee: ¥700
◆ Time: 8:00pm~9:00pm



Michi-no-eki Tourist Information Center

Navi **0982-72-2269**
(Takachiho Gorge Freshwater Aquarium)



Walking path
About 1km from Ohashi Parking Lot to Takachiho Gorge Monument (About 30mins by walk)

- Parking Lot for buses
- Parking Lot
- Temporary parking Lot
- Tourist Information Center
- One way only
- Souvenir shop
- Restaurant
- Restroom
- WiFi

Ohashi Tourist Information Center
Open 8:30am~5:00pm

Tourist Association Souvenir Shop
Open 8:30am~5:00pm

Takachiho Gorge Freshwater Aquarium
◆ Fee: ¥300
◆ Open: 9:00am~5:00pm

Takachiho Gorge Rental Boat
◆ Fare: ¥2000
◆ Time: 30mins
◆ Capacity: 3 passengers

Takachiho Tourist Association
TEL (0982) 73-1213
Takachiho Town Office
TEL (0982) 73-1212

Takachiho Gorge Gourmet

Takachiho Croquette
Keikoku Dango
Soft Ice Cream

Nagashi Somen

Boat Rental Service

Nakayama Joseki Camping Ground

Takachiho Gorge



Takachiho Gorge was formed by 4 time eruptions of Mt.Aso, 270 thousand years ago, 140 thousand years ago, 120 thousand years ago and 90 thousand years ago. The average height is 80 meters and the highest point is 100 meters. The V-shaped valley formed for about 7 kilometers from east to west.

There is an about 1km long walking path along the river. From this walking path, you can enjoy amazing scenery such as Manai Waterfall which was selected as one of 100 most beautiful waterfalls in Japan.

- Designated as a natural monument in 1934.
- Designated as a part of Sobo-Katamuki Quasi-National Park in 1965.

① Manai Waterfall

Manai Waterfall was selected as one of 100 Most Beautiful Falls in Japan. It is about 17 meters high. In the Kojiki (A Japanese historical book), the water of Amanomanai which was relocated by a god called Amenomurakumo, run down here through the underground.

② Tamatare Waterfall

Tamatare Waterfall is about 5 meters high and 15 meters wide. The scenery of water dropping down a series of cascades is beautiful.

③ Onokoro-ike Pond / Onokoro-jima Island

Onokoro-jima Island is a small island which is in Onokoro-ike Pond. This island is the first island made by gods. We carry Mikoshi (Portable Shrine) and go into Onokoro-ike Pond and turn around Onokoro-jima Island three times in the spring festival of Takachiho Shrine.

④ Sennin-no-Byoubuiwa Cliff

Sennin no Byoubuiwa Cliff is 70 meters high. Only the hermits who have divine power, can make this beautiful cliff. Therefore it is called "Sennin no Byoubuiwa (Sennin means a hermit and Byoubuiwa means a wall of rock.)"

⑤ Kihachi-no-Chikaraishi Rock

Kihachi-no-Chikaraishi Rock is a 200 ton rock which was thrown by Kihachi (an evil monster) for showing his power.

⑥ Takachiho Three Bridges

You can see three different structured bridges from Takachiho Gorge walking path. The spot you can see three different structured bridges together is very rare.

The lowest bridge is called "Shin-bashi Bridge", the second one is called "Takachiho-ohashi Bridge" and the highest one is called "Shinto-Takachiho-ohashi Bridge".

⑦ Potholes

From Takachiho Gorge walking path, you can see potholes made by the energy of flowing water and small stones.

⑧ Yaritobi-bashi Bridge

⑨ Nanatsuga-ike Pond

⑩ Sakontaro

⑪ Water Mill

A long time ago, there were no machines and everyone needed to do everything by hand. They made this kind of watermill to shorten the amount of time. This watermill was used for drawing water, peering taros and washing vegetables.

⑫ Tsuki-gata

⑬ Kyutaro Sui Shrine

⑭ Columnar Joint

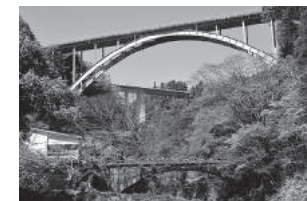
At Takachiho Gorge, you can see beautiful columnar joints.

⑮ Takachiho Gorge Monument

⑯ Bokusui Wakayama's Monument with his poem

⑰ Hakusyu Kitahara's Monument with his poem

⑱ Santouka Taneda's Monument with his poem



Takachiho Gorge Rental Boat

- Fare : ¥2000 per boat
- Extension charges: ¥300 for every 10 mins.
- Time : 30 mins
- Maximum Capacity : 3 passengers
- Opening Hours : 8:30am ~ 5:00pm
(Reception : ~4:30pm)



- ※ Our boat service doesn't allow pets.
- ※ Opening hours may change depending on the season.
- ※ Closing time may move up depending on waiting time.
- ※ The boat service may close for several conditions such as water level rising, safety check, etc.

 Navi : 0982-72-2269

(Takachiho Gorge Freshwater Aquarium)

Tel:0982-73-1213 <http://www.takachiho-kanko.info/>

(Takachiho Tourist Association)

- Please use Ohashi Parking Lot for large vehicles.

Parking Lots and Bicycle Parking Area

CHECK

- ◆ Oshioi Parking Lot : 500 yen
- ◆ Araragi Parking Lot : 300 yen
- ◆ Ohashi Parking Lot : Free of charge
- ◆ Bicycle Parking Area: Near ③ Onokoro-ike Pond / Onokoro-jima Island (Free of charge)
- ※ In case the parking lot is full, please follow the staff's instruction.