



宮崎

# 花旅

HANATABI  
Guide Book

Floral Tourism in The Sunshine Capital, Miyazaki



Josenji Temple

## SPRING



Burial Mounds



Haginochaya Flutes

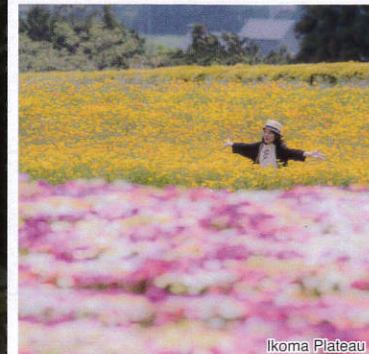


Autumn Leaves of Takachiho

## AUTUMN



Kagura



Ikoma Plateau

# HANATABI\* MIYAZAKI\*



MIYAZAKI

An unforgettable trip filled with  
365 days of fragrant flowers  
**HANATABI MIYAZAKI**

Miyazaki, blessed with a mild climate, is the perfect destination to savor seasonal flowers and breathtaking nature. The sprawling scenic landscapes are just like a beautiful painting. Get ready to relax and fall in love with the flowers you encounter.



Sunflowers of the Saibaru Burial Mounds



Hydrangeas of Cape Toi



Nichinan

## SUMMER



Miyakoh Botanic Garden





Clay Images



Plums of Yunomiya Zaronbai

## WINTER

### How to read this guide book

-  Address
-  Entrance Fee
-  Contact
-  Business Hours
-  When arriving by car
-  When arriving by bus



Locate prime flower viewing spots with the Mapcode!

The Mapcode refers to a combination of numbers that can be used to specify the corresponding location on the map. Insert the map code of the spot that you wish to visit in your car navigation system and it will guide you to your preferred destination.

\*Map Code® and \*MAPCODE® are registered trademarks of Denso Corporation.

# Sakura

## Cherry blossoms

Best time to see  
End of March to the beginning of April



### 1 Special Historical Park Saitobaru Burial Mounds ▲

2,000 cherry blossoms and 300,000 rape flowers decorate Japan's largest ancient tumulus cluster, mesmerizing the visitors with the stark contrast with the blue sky.

- 📍 Miyake Saitobaru, Saito
- ☎ 0983-41-1557
- 🚌 15 min. from Saito IC, 30 min. from JR Hyuga Shintomi St.
- 🆓 Free

📍 219 122 362\*22

#### When using bus

Bus route  
220 Miyako City bus station → Saitobaru kouohakubutsukan



### 2 Mochio Park ▲

Selected as one of Japan's top 100 parks to see cherry blossoms, Mochio Park boasts 2,600 cherry blossom trees stretching over both sides of the walk way. The night viewing is a must-see during the festival.

- 📍 Yokoichi-cho 6633, Miyakonojo ☎ 0986-23-2460
- 🚌 15 min. from Miyakonojo IC, 20 min. from JR Miyakonojo St.
- 🆓 Free\* Except during Cherry blossom festival in some parking area.

📍 117 571 594\*16

#### When using bus

Bus route  
600 Bus stop 16 at Miyako City bus station → Nishi Miyakonojo-eki mae bus station

🚗 Approx. 15 min. by car

### 3 Maizuru Park ▲

Maizuru Park was built around the historic Takanabe Castle ruins. The cherry blossoms and azalea bloom inside the park attract numerous visitors each year.

- 📍 Uwae 1345, Takanabe ☎ 0983-22-5588
- 🚌 15 min. from Takanabe IC, 10 min. from JR Takanabe St.
- 🆓 Free

📍 219 135 404\*02

#### When using bus

Bus route  
101 Miyako City bus station → Chujo Dori  
105  
106

🚶 Approx. 10 min. walk



### 4 Josenji Temple ◀

The 300-year old weeping cherry blossom tree is designated as the prefecture's natural monument. Baby pink flowers bloom on the branches that hang gracefully.

- 📍 Sangasho 8701, Gokase
- ☎ 0982-82-1200
- 🚌 1 hour 10 min. from Kitakata IC, 1 hour 30 min. from JR Nobeoka St.
- 🆓 Free

📍 330 610 145\*31

#### When using bus

Bus route  
Highway bus Nanpu Miyako City bus station → Mashiki inter guchi  
Bus route  
Highway bus Takachino Mashiki inter guchi → Gokase-cho yakuba mae

🚗 Approx. 5 min. by car

### 5 Makiba no Sakura ▼

Walk the cherry blossom tunnel! During the "Makiba no Sakura Festival", you can view illuminated flowers under fireworks and purchase local specialty products from the booths.

- 📍 Near Hosono 4178-111, Kobayashi
- ☎ 0984-22-8684
- 🚌 10 min. from Kobayashi IC, 10 min. from JR Kobayashi St.
- 🆓 Free

📍 227 490 655\*07

#### When using bus

Bus route  
To Kobayashi St. Bus stop 1 at Miyako City bus station → Kobayashi bus station mae

🚗 Approx. 10 min. by car



CHECK here!  
Enjoy the lit-up cherry blossoms at night (around the end of March)

## Hanami, a Japanese tradition of celebrating the beauty of cherry blossoms

Hanami is a Japanese tradition of appreciating cherry blossoms. Typically, co-workers or family members get together and indulge in eating and drinking under cherry trees. It is believed that hanami began in the year 812 by Emperor Saga. Japanese people take pleasure in nature based on a belief that the beauty of nature lies in the transition of the four seasons.



# Spring

[Mar.] [Apr.] [May]



Best time to see  
April

## 6 Toshiyuki Kuroki's Moss Phlox (Open Garden) [Moss Phlox]

Pink moss phlox blankets the Kuroki family's private garden that spans over 3,960 m<sup>2</sup>. The moss, which Kuroki planted for his wife for over 20 years, is the reflection of his love for the wife and memories that they cherished.

📍 Nyuta 17423, Shintomi  
☎ 0983-33-6029  
🚗 20 min. from Saito IC, 15 min. from JR Hyuga Shintomi St.  
🆓 Free  
📞 219 069 736\*85

**When using bus**  
Bus route  
200 Miyazaki St. → Seguchi  
Bus route  
105 Seguchi → Nyuta shisho mae  
Approx. 5 min. walk



The love filled within the moss phlox planted by Kuroki for his wife in the 30th year of their marriage, Kuroki's wife Yasuko lost her vision. Kuroki began planting the moss phlox to cheer up Yasuko from the tragic event. The work that he has put into his garden for over 20 years symbolizes the love towards his wife.



Best time to see  
Middle of April to the end of April

## 7 Shiibae Park [Azalea]

The park is noted for the stunning contrast between the greenery of the mountains and the 60,000 azaleas and 50 double cherry blossoms.

📍 Nagata 5515-1, Mimata ☎ 0986-52-9084  
🚗 30 min. from Miyakonojo IC, 20 min. from JR Mimata St.  
🆓 Free  
📞 117 595 291\*68

**EVENT**  
**Azalea Festival**  
[Mid- to Late-April]

**When using bus**  
Bus route  
600 Bus stop 16 at Miyako City bus station → Nishi Miyakonojo-eki mae bus station  
Approx. 7 min. walk  
Bus route  
To JR Mimata-eki mae Hirokuchi → JR Mimata-eki mae  
Approx. 15 min. by car



Best time to see  
End of May to the beginning of June / Middle of September

## 8 Miyazaki Bougainvillea Airport [Bougainvillea]

Check out various exhibits and entertainment at the Miyazaki Airport and learn about Miyazaki. Bougainvilleas and palm trees are gorgeously decorated inside the building.

📍 Miyazaki Airport, Akae, Miyazaki ☎ 0985-51-5111  
🚗 5 min. from Miyazaki IC, 20 min. from JR Miyazaki St.  
🆓 Free\* Toll parking after 30 min.  
📞 66 143 308\*84

**When using bus**  
Miyazaki St./Miyako City bus station ↔ Miyazaki Airport, shuttle bus available



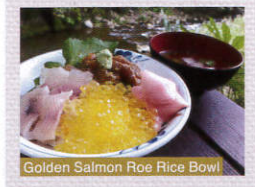
## 9 Syakunage Forest [Rosebay flowers]

Japan's largest rosebay flowers garden featuring rosebay flowers collected from throughout the world. The "forest" lives up to its name as 30,000 rosebay flowers of over 500 varieties are grown in the garden.

📍 Nagata 5268, Mimata  
☎ 0986-54-1367  
🚗 30 min. from Miyakonojo IC, 25 min. from JR Mimata St.  
🆓 Free\* Except during events  
📞 117 568 664\*67

📷 Enjoy the scenic view of the rosebay flowers from the park observatory and take memorable photos. A camera stand is also installed here.

The "golden salmon roe" is harvested from the "legendary cherry salmon" that were grown in the farm for two years inside the garden. It is a rare treat that you cannot easily come across the market.



**When using bus**  
Bus route  
600 Bus stop 16 at Miyako City bus station → Nishi Miyakonojo-eki mae bus station  
Approx. 7 min. walk  
Bus route  
To JR Mimata-eki mae Hirokuchi → JR Mimata-eki mae  
Approx. 15 min. by car



Best time to see  
End of March to the end of April



Best time to see  
End of March to the beginning of April

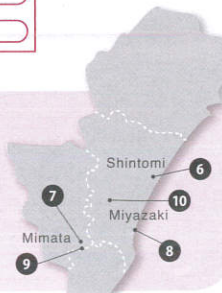
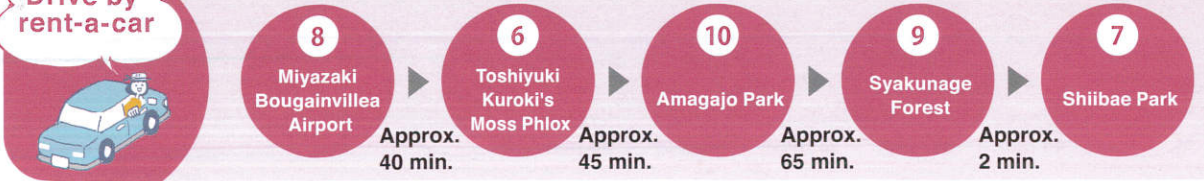
## 10 Amagajo Park [King cherry/Azaleas]

1,300 cherry blossoms adorn the castle. Various events are held during the "Amagajo Kaimon Sakura Festival," which is held each year during the cherry blossom season.

📍 Uchiyama 3003-56, Takaoka-cho, Miyazaki  
☎ 0985-82-2950  
🚗 15 min. from Miyazaki Nishi IC, 30 min. from JR Miyazaki St.  
🆓 Free  
📞 66 425 791\*63

**When using bus**  
Bus route  
410 Miyazaki St. → Takaoka-sho iriguchi  
411  
455  
Approx. 15 min. walk

Drive by rent-a-car



# Summer

[June] [July] [Aug.]



Best time to see  
Beginning to the middle of August

## 11 Sunflower Field at Somegaoka [Sunflowers]

The scenery spanning over 11 million sunflowers is a mesmerizing sight. You can also try out the maze made up of sunflowers.

- 📍 Mochida-aza Somegaoka, Takanabe ☎️ 0983-22-5588
- 🚗 15 min. from Takanabe IC, 20 min. from JR Takanabe St.
- 🅕 Free\*500 yen for parking, 300 yen for shuttle bus during Sunflower festival

MAPLEDE® 219 258 351\*35

**When using bus**

Bus route  
101-105-106 Miyako City bus station → Takanabe bus station

Bus route  
Michino-eki Tuno Takanabe bus station → Nogyo daigakou mae

🚗 Approx. 10 min. by car

### EVENT

#### Sunflower Festival at the Cabbage Field [Mid-August]

During the festival, you can cut and take sunflowers home for free of charge.



Get lost in the gigantic maze

Inside Japan's largest sunflower field is a gigantic maze! It is very popular among people of all ages.



Honami Stand

A 4m-tall steel stand is installed for hanami during the festival. Take the best photos from here

## 12 Special Historical Park Saitobaru Burial Mounds [Sunflowers]

One of the nation's largest ancient tumulus clusters built between the 4th century and the 7th century, Saitobaru has over 300 burial mounds scattered around the site. Over one million sunflowers bloom here in the summer.

- 📍 Miyake Saitobaru, Saito ☎️ 0983-41-1557
- 🚗 15 min. from Saito IC, 30 min. from JR Hyuga Shintomi St.
- 🅕 Free

MAPLEDE® 219 122 362\*22

You can go around comfortably by rental bike

90 minutes free of charge  
Available 25 bicycles

**When using bus**

Bus route  
220 Miyako City bus station → Saitobaru koukohakubutsukan



Best time to see  
Middle to end of July

Drive by rent-a-car



## 13 Jacaranda Forest [Jacaranda]

Jacaranda trees are considered to be one of the three largest flowering trees in the world. Nango in Nichinan City is the only place in Japan where you can see the jacaranda forest.

It is located near Michino-eki Nango, a rest area offering picnic areas and restaurants.

- 📍 Nienami 3220-24, Nango-cho, Nichinan ☎️ 0987-31-1134
- 🚗 1 hour 20 min. from Miyazaki IC, 15 min. from JR Nango St.
- 🅕 Free

MAPLEDE® 724 585 893\*07



**When using bus**

Bus route  
66 Bus stop 17 at Miyako City bus station → Tamoto jinja mae

Bus route  
965 Tamoto jinja mae → Kasuga

Bus route  
Kojima Iriguchi Iki Kasuga → Michino-eki Nango

🚗 Approx. 2 min. by car



The scenic "Aburatsu Port" a natural port is nearby.

Many large cruise ships including "Quantum of the Seas" dock at Aburatsu Port, which can be reached in 20 minutes by car. In mid-July, over 10,000 fireworks are set off to celebrate the Aburatsu Port Festival. Visitors can also have a sneak peak inside a cruise ship during the festival.



Best time to see  
End of May to the end of June

Executive Committee of the Nichinan Jacaranda Festival

## EVENT

### Jacaranda Festival [Late-May to mid-June]

The jacaranda trees are lit up at night, creating a beautiful and magical atmosphere. During this period, various events are held to add excitement to the festival.

View the stunning scenery of Miyazaki's coastline beyond the jacaranda trees from the wooden deck.

Observation Platform

## 14 Ebino Plateau [Kyushu Azalea]

Ebino plateau is the first national park in Japan. You can find various seasonal flowers here.

- 📍 Suenaga 1495-5, Ebino ☎️ 0984-33-3002
- 🚗 40 min. from Ebino IC, 35 min. from JR Ebino St.
- 🅕 Free\* 500 yen for parking

MAPLEDE® 376 416 131\*15

**When using bus**

Bus route  
Rindo Bus stop 1 at Miyako City bus station → Ebino kogen



### Ebino plateau is Japan's first national park.

Located 1,200m above sea level in the northern part of Kirishima-Yaku National Park, Ebino Plateau welcomes visitors all-year-round with its grand nature.

Climb 500m to the top of Mt. Karakunidake and see a stunning 360-degree scenic view.



Ashiyu no eki Ebino Plateau

Enjoy Kyushu Azaleas at Tsutsujigaoka, which is located near the "Ashiyu-no-eki" parking lot.



Best time to see  
End of May to the middle of June

©Ebino city, Jirifosawa

\*Please check all regulatory information before climbing the mountain for safety purposes.

# Autumn

[Sept.] [Oct.] [Nov.]



Best time to see  
End of September to the end of October

## 15 Ikoma Plateau Flower Station [Cosmos]

Ikoma Plateau is most famous for cosmos flowers. With the Mt. Kirishima mountain range in the background, the scenic view of over one million cosmos flowers is simply breathtaking.

- Minami nishikata 8565, Kobayashi ☎ 0984-27-1919
- 5 min. from Kobayashi IC, 20 min. from JR Kobayashi St.
- High school students or older: 520 yen, Junior high school students: 300 yen, Under elementary school: free, Group over 15 people: 400 yen per person

MAPLODE 227 513 022\*85

**When using bus**

Bus route  
Rindo for Ebino kogen Bus stop 1 at Miyako City bus station → Ikoma kogen

### EVENT

#### Cosmos Festival

[Mid-September to the end of October]

25,000 candles and 300 lanterns create a magical world during the "Night Cosmos" event, which is held during the Cosmos Festival in mid-October. Fireworks are set off as well.



Best time to see  
End of September

## 16 Sennin no Tanada

Sennin-no-Tanada in Shiiba Village is commonly referred to as the "Machu Pichu of Shiiba". Swaying in the autumn winds, the golden rice plants create an authentic Japanese landscape. Get a bird's eye view of the terraced rice fields from the "Oichou observatory".

- Shiiba, Higashiusuki ☎ 0982-67-3139
- 130 min. from Hyuga IC, 130 min. from JR Hyuga St.
- Free

MAPLODE 501 853 735\*62



View the scenic view pictured above from the "Oichou observatory platform" which is located along the opposite shore.

## 17 Cape Toi [Red spider lily]

The southernmost point of Miyazaki Prefecture. The bright red spider lilies spruce up the green grasslands inhabited by wild horses.

- Ono-aza Misaki, Kushima ☎ 0987-76-1546
- 2 hours from Miyazaki IC, 40 min. from JR Kushima St.
- 400 yen per car, 100 yen per motorcycle (as wildlife conservation fee)

MAPLODE 724 100 710\*50

**When using bus**

Bus route  
965 Bus stop 16 at Miyako City bus station → Kasuga

Bus route  
To Kojima Iriguchi Kasuga → Kojima Iriguchi

Approx. 30 min. by car

### The wild horses "Misakiuma (Misaki horse)" inhabiting Toimisaki

Misaki horses were designated as a protected species in 1953. Cape Toi is home to over 100 Misaki horses.



Best time to see  
Beginning to the end of November

## 19 Ebino Plateau [Silver grass]

Ebino plateau is the first national park in Japan. You can find various seasonal flowers at the plateau.

- Suenaga 1495-5, Ebino ☎ 0984-33-3002
- 40 min. from Ebino IC, 35 min. from JR Ebino St.
- Free\* 500 yen for parking

MAPLODE 376 416 131\*15

\*Please check all regulatory information before climbing the mountain for safety purposes.

**When using bus**

Bus route  
Rindo Bus stop 1 at Miyako City bus station → Ebino kogen

### Drive by rent-a-car



Miyazaki Bougainvillea Airport

Approx. 100 min.

17

Cape Toi

15

Ikoma Plateau Flower Station

19

Ebino Plateau

Central Miyazaki

Approx. 20 min.

18

Takachiho Gorge

16

Shiiba

15

Kobayashi

19

Ebino

17

Miyazaki

18

Takachiho

16

Shiiba

15

Kobayashi

19

Ebino

17

Miyazaki

18

Takachiho

## 18 Takachiho Gorge [Autumn leaves]

Takachiho gorge is a nationally designated scenic spot and natural monument that was formed by the pyroclastic flows from the eruption of Mt. Aso. Rent a boat and relish the scenery from under the Manai waterfall.

- Mitai Oshioi, Takachiho ☎ 0982-73-1212
- 50 min. from Kitakata IC, 1 hour 10 min. from JR Nobeoka St.
- Free\* Pay necessary for some parking.

MAPLODE 330 711 790\*70

**When using bus**

Bus route  
Highway bus Himuka Miyako City bus station → Nobeoka-eki mae bus station

Bus route  
2-71-72 Nobeoka-eki mae bus station → Takachiho bus station

Bus route  
75 Takachiho bus station → Hotel Takachiho mae

Approx. 15 min. walk



Take photos of the Manai waterfall from here



Take the best shot of the Manai waterfall (featured on the left) from this location.

View the Takachiho Gorge on a boat

Manai waterfall was selected as one of the 100 best waterfalls in Japan.

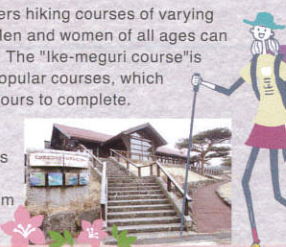
- 8:30~17:00 (\*Admission ends at 16:30)
- 2,000 yen / 30 min.
- 0982-73-1213



### Recommendation for hiking enthusiasts

Ebino Plateau offers hiking courses of varying difficulty levels. Men and women of all ages can enjoy hiking here. The "Ike-meguri course" is one of the most popular courses, which takes about two hours to complete.

Information on trekking courses is available at the Ebino Eco-Museum Center.



Best time to see  
Beginning of September to the end of October

# Winter

[Dec.] [Jan.] [Feb.]



Best time to see  
End of January to the middle of February

## 20 Kourinbai [Plum (Kobai, koume, shirakaga, bungo)]

Inside the Aoshima natural recreation village, you can find 650 wintersweet, kobai, and hakubai flowers in bloom. The "Kourinbai Festival" is held during the plum blossom season.

📍 Kaeda 6896, Miyazaki (Aoshima shizen kyuyo-son)  
☎ 0985-65-1921  
🚌 15 min. from Miyazaki IC, 10 min. from JR Sosanji St.  
🆓 Free  
📞 843 189 183\*14

**When using bus**  
Bus route  
910~953 Miyako City bus station → Aoshima  
🚗 Approx. 10 min. by car



Best time to see  
February



Best time to see  
End of December to the beginning of April

## 21 Shiroyama Park (Nobeoka Castle ruins) [Camellia]

Find the camellias of various colors, shapes, and sizes. Over 3,300 camellias of 108 varieties grow here.

📍 Higashihonkoji, Nobeoka ☎ 0982-29-2155  
🚌 10 min. from Nobeoka IC, 10 min. from JR Nobeoka St.  
🆓 Free  
📞 136 889 261\*82

**When using bus**  
Bus route  
Highway bus Himaka Miyako City bus station → Chuo-dori 2 chome  
🚶 Approx. 15 min. walk

### EVENT

#### Nobeoka Hana Monogatari

[Beginning of February to the end of March]  
Various flowers including plum blossoms, rape flowers, and camellias bloom here at Gokasegawa River in the beginning of spring. Local entertainment and gourmet events are held during the flowering season.



## 22 Nationally Designated Natural Monument Yunomiya Zaronbai [Plum]

This is a famous historic spot for plums. Beautiful white flowers bloom here on the branches that are said to be over 600 years old.

📍 Nyuta Yunomiya, Shintomi ☎ 0983-33-6029  
🚌 15 min. from Saito IC, 15 min. from JR Hyuga Shintomi St.  
🆓 Free  
📞 219 039 266\*45

**When using bus**  
Bus route  
105 Miyako City bus station → Minashiro  
107  
🚗 Approx. 10 min. by car

## 23 Tsubakiyama Shinrin Park [Camellia]

This mountain forest earned its name "Tsubakiyama" for the native camellias growing all over the mountain. It was recognized as Japan's first "Best International Camellia Garden" in 2003.

📍 Kagamizu 4343-1, Miyazaki ☎ 0985-58-3200  
🚌 50 min. from Miyazaki IC, 50 min. from JR Kibana St.  
🆓 Free  
📞 591 119 474\*61

**When using bus**  
Bus route  
811 Bus stop 17 at Miyako City bus station → Kibana  
🚗 Approx. 50 min. by car

### Meet winter flowers at this park between November and March



Sasanqua camellias bloom between November and December, followed by camellias which bloom between January and March. 48,000 camellias of over 1,000 varieties are planted here.

### Hand-squeezed camellia oil

Hand-squeezed camellia oil is made from the plants that naturally fell from the trees. You can purchase the oil in bottles at the "Miyazaki Products Shop KONNE."

Handmade at Koko (Freshly squeezed camellia oil)  
1,713 yen (tax excluded)  
Size: 40ml



Miyazaki Products Shop KONNE 1-6 Miyata-cho, Miyazaki-shi, Miyazaki Prefectural Office Building 8 1st Floor



### Drive by rent-a-car



# Enjoy the flowers all-year-round

## 24 Florante Miyazaki



Find seasonal flowers and plants here all-year-round. The park hosts various seasonal events, including the "Spring Floral Festival" in the spring, the "Miyazaki Gourmet and Lantern Night," where thousands of lanterns are lit up in the summer, the "Autumn Floral Festival" in the fall, and Christmas illuminations in the winter.

📍 Hamayama 414-16, Yamasaki-cho, Miyazaki ☎ 0985-23-1510  
🚌 15 min. from Miyazaki IC via Hitotsuba toll road, 15 min. from JR Miyazaki St.  
🆓 Individual: Adult 310 yen, child 150 yen  
Group over 20 people: Adult 240 yen, child 120 yen  
\* Child refers to as elementary and junior high school student.

📞 66 446 186\*51

**When using bus**  
Bus route  
18-18-1 Miyako City bus station → Florante Miyazaki  
18-2-811

### <Seasonal events that can be enjoyed all-year-round>



spring  
**Spring Floral Festival**  
[Scheduled for the beginning of March to the end of May]



summer  
**Miyazaki Gourmet and Lantern Night**  
[Scheduled for the beginning to the middle of August]



autumn  
**Autumn Floral Festival**  
[Scheduled for the beginning of October to the middle of November]



winter  
**Illumination Flower Garden**  
[Scheduled for the beginning of December to the beginning of January]

## 25 Miyakoh Botanic Garden Aoshima



A special commemorative "Livistona" plant community, which grows on the Nichinan Kaigan National Park in Aoshima can be seen. In addition, Phoenix trees and crinum flowers, the Miyazaki Prefecture official tree and flower are grown here to create a southern tropical Miyazaki image.

Renewal opening in March 2016!  
Rotary flowerbeds where you can enjoy seasonal flowers  
The rotary flowerbeds are the "face" of the various seasonal events. The spring and autumn "Bougainvillea Collections" feature a 4m tall and 7m wide "Bougain Mountain".

Enjoy seasonal drinks at the Palo Borracho Café.

📍 Aoshima 2 chome 12-1, Miyazaki ☎ 0985-65-1042  
🚌 15 min. from Miyazaki IC, 1 min. from JR Aoshima St.  
🆓 Free  
📞 843 161 799\*16

**When using bus**  
Bus route  
910~953 Miyako City bus station → Aoshima  
965  
🚶 Approx. 2 min. walk

### <Seasonal events that can be enjoyed all-year-round>



spring  
**Bougainvillea Collection** [April to May]  
30 types of flowers including the Elizabeth Angus and the Double Pink as well as 150 bougainvillea plants pepper the greenhouse, Bougain Mountain roundabout and the terrace deck.



summer  
**Tropical Fruit Exhibition** [August]  
Everyday tropical fruits such as pineapples and mangoes as well as rare fruits such as jaboticaba and star fruits can be found at the exhibition.



autumn  
**Autumn Flower Show** [October to November]  
Marigolds, salvia, Joseph's coat, and various other wild autumn flowers spruce up the park with their vibrant colors. Perennial salvia, ornamental grass, and bougainvillea plants can be spotted in large pots around the terrace deck.

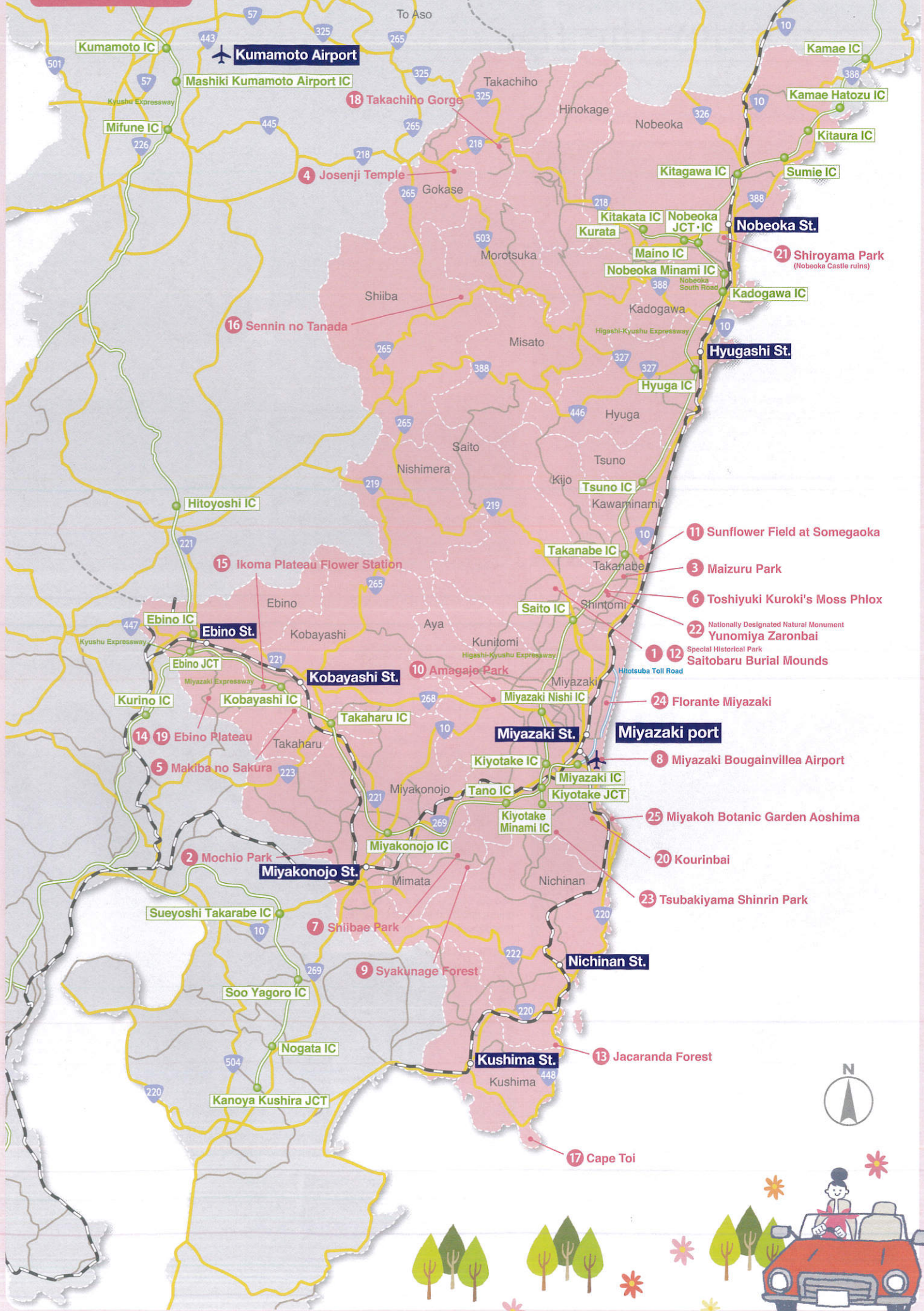


winter  
**Winter Flower Show** [January to February]  
Many flowers to see even in the middle of the winter. Springtime flowers that cannot be found anywhere else during this time decorate the park. Enjoy vibrant scenic views of stock flowers, pansies, and sweet alyssum that you can only see at Aoshima.



The greenhouses are filled with vibrant flowers all-year-round.  
A Merlion statue is installed inside the greenhouse to commemorate the 50th anniversary of the botanic garden's friendship with the Singapore Botanic Gardens.

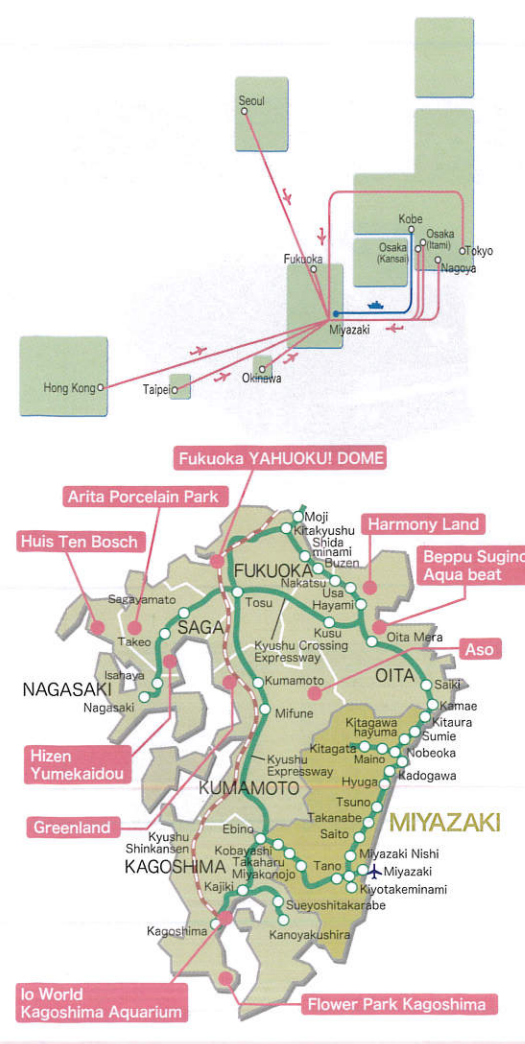
# Flower MAP



# Flower calendar

	Mar.	Apr.	May	June	July	Aug.	Sept.	Oct.	Nov.	Dec.	Jan.	Feb.
1 12 Special Historical Park Saitobaru Burial Mounds	Brassica, Prunus yedoensis				Sunflower		Red spider lily, Cosmos					
2 Mochio Park	Prunus yedoensis											
3 Maizuru Park	Cherry, Azalea											Plum
4 Josenji Temple	Weeping cherry											
5 Makiba no Sakura	Cherry											
6 Toshiyuki Kuroki's Moss Phlox (Open Garden)	Moss phlox											
7 Shiibae Park	Kurumetsutsuji											
8 Miyazaki Bougainvillea Airport		Bougainvillea	Bougainvillea				Bougainvillea					
9 Syakunage Forest	Rosebay flower											
10 Amagajo Park	King cherry, Azalea											
11 Sunflower Field at Somegaoka					Sunflower							
13 Jacaranda Forest		Jacaranda	Jacaranda									
14 19 Ebino Plateau	Winter Hazel	Kyushu Azalea	Japanese stewartia				Silver grass	Autumn leaves				Rime
15 Ikoma Plateau Flower Station	Brassica, Poppy				Sunflower		Cosmos	Ears of rice				
16 Sennin no Tanada												
17 Cape Toi	Pasqueflower			Hydrangea			Blackberry lily	Red spider lily, Rattlepod				
18 Takachiho Gorge								Autumn leaves				
20 Kourinbai												Plum
21 Shiroyama Park (Nobeoka Castle ruins)	Camellia, Prunus yedoensis										Camellia	
22 Nationally Designated Natural Monument Yunomiya Zaronbai												Plum
23 Tsubakiyama Shinrin Park	Camellia											Camellia
24 Florante Miyazaki	Tulip	Pelunia etc.	Hydrangea etc.	Sunflower etc.			Cosmos etc.	Paris etc.				
25 Miyakoh Botanic Garden Aoshima	Bougainvillea etc.						Streilizia etc.					Stock etc.

# Routes to Miyazaki



**Air** As of Oct.2016

Route	Flight Times	Frequency	Airlines
Tokyo	90mins	18/day	ANA · JAL · SNA
Osaka (Kansai)	65mins	1/day	PEACH
Osaka (Itami)	65mins	11/day	ANA · JAL
Nagoya	75mins	3/day	ANA · IBEX
Fukuoka	45mins	13/day	ANA · JAL · IBEX
Okinawa	80mins	1/day	SNA
Seoul	100mins	3/week	ASIANA AIRLINES
Taipei	130mins	2/week	CHINA AIRLINES
Hong Kong	180mins	2/week	HONG KONG AIRLINES

**Contact**  
 ANA ☎ 0570-029-222 JAL ☎ 0570-025-071  
 SNA ☎ 0570-037-283 IBEX ☎ 0120-686-009  
 PEACH ☎ 0570-064-731  
 CHINA AIRLINES ☎ 0985-64-9811  
 HONG KONG AIRLINES ☎ 098-987-0622  
 ASIANA AIRLINES ☎ 0570-082-555

**JR (Limited express)** As of Oct.2016

From	Time to JR Miyazaki Station
Hakata	Approx. 5 hrs 9mins (Via Kyushu-shinkansen Approx. 3 hrs 40 mins)
Kokura	Approx. 4 hrs 23mins
Oita	Approx. 3 hrs
Nobeoka	Approx. 1 hr
Hyuga	Approx. 45mins
Kagoshima	Approx. 2 hrs
Miyazaki Airport	Approx. 10 mins

**Contact** Miyazaki station ☎ 0985-23-3454

**Express Buses** As of Oct.2016

Bus name	Route	Approx. time	Frequency
Phoenix	Fukuoka-Miyazaki	4 hrs 30 mins	28/day
Himuka	Nobeoka-Miyazaki	1 hr 55 mins	5/day
Gokase	Fukuoka-Nobeoka	5 hrs	4/day
Nanpu	Kumamoto-Miyazaki	2 hrs 50 mins	14/day
Hamayu	Kagoshima-Miyazaki	2 hrs 45 mins	7/day
Blue Roman	Nagasaki-Miyazaki	5 hrs 20 mins	2/day
Aso-Takachiho	Kumamoto-Nobeoka	3 hrs 40 mins	2/day
B&S Miyazaki	Shinyatsushiro-Miyazaki	2 hrs 5 mins	16/day
Pacific Liner	Oita-Bepu-Miyazaki-Nobeoka	Approx. 3 hrs 45 min*	6/day
Miyazaki⇄Takachiho line	Takachiho-Miyazaki	Approx. 2 hrs. 40 min.	Sa,Su,Holidays/Other busy days

**Contact** Miyazaki Kotsu ☎ 0985-32-0718  
 \*Bepu-Miyazaki

**JR(Shinkansen)+Express Buses (B&S Miyazaki)** As of Oct.2016

From	Time to Miyazaki Station
Hakata	Approx. 3 hrs 4mins
Shinyatsushiro	Approx. 2 hrs 3mins

**Contact** Miyazaki station ☎ 0985-23-3454  
 ※It is the fastest time required including the transit time.  
 ※The means of transportation which goes Shin-Yatsushiro Station to Miyazaki-Station is only the express bus.

**Car Ferry** As of Oct.2016

Route	Kobe	Miyazaki
Approx. time		12 hrs 20 mins
Frequency		1/day
Carrier Name		Miyazaki Car Ferry

**Contact** Miyazaki Car Ferry Reservations Center  
 Kansai ☎ 078-321-3030  
 Miyazaki ☎ 0985-29-5566

**Information for sightseeing**

**Miyazaki Pref. Tokyo Office**  
 Todofukenkaikan 15F, 2-6-3, Hiraikawa-cho, Chiyoda-ku, Tokyo 102-0093 ☎ 03(5212) 9007

**Miyazaki Pref. Osaka Office**  
 Osaka Ekimae 1st Bld., 1-3-1-900, Umeda, Kita-ku, Osaka 530-0001 ☎ 06(6345) 7631

**Miyazaki Pref. Fukuoka Office**  
 Tenjin Bld., 8F, 2-12-1, Tenjin, Chuo-ku, Fukuoka 810-0001 ☎ 092(724) 6234

**Other tourist information offices (English is spoken)**

**Miyazaki Municipal Tourist Information Center**  
 (JR Miyazaki Station) ☎ 0985(22) 6469

**Miyazaki Bougainvillea Airport Information Center**  
 ☎ 0985(51) 5114

**Miyazaki Convention & Visitors Bureau**  
 KITEN Bld 3F, 1-10, Nishiki-machi, Miyazaki City 880-0811  
<http://www.kanko-miyazaki.jp/> ☎ 0985(26) 6100

**Miyazaki Pref. Tourism Promotion Section**  
 2-10-1, Tachibana dori Higashi, Miyazaki City 880-8501  
<http://www.pref.miyazaki.lg.jp/> ☎ 0985(26) 7530



Available in areas with this sticker

Miyazaki Prefecture's Free Wi-Fi Service

# MIYAZAKI FREE Wi-Fi



## Shun-Navi

Check out the website for more information on Miyazaki

<http://www.kanko-miyazaki.jp/>

miyazaki shun navi



## Japan Wi-Fi / Japan Guide

Use these two apps to make your Kyushu trip more convenient, cheaper, and comfortable!

**Free app** Easy Wi-Fi connection within Kyushu area!



One-time login is required for authentication confirmation

**Free app** Full of tourist information of Kyushu!



Discount coupons!

Download the apps now!



Access it from this QR Code as well.



Japan Travel Guide

- Japan Guide app (Japan Travel Guide): Any inquiries, please contact; E-mail: info@jtg.jp (JTB Tourism Research & Consulting Co., NTT ADVERTISING, INC.)
- Japan Wi-Fi app (Japan Connected-free Wi-Fi): Any inquiries, please contact; E-mail: jctw@ntt-bp.net (NTT Broadband Platform, Inc.)

[General Inquiries] Miyazaki Prefecture Tourism, Labor, and Economic Exchange Bureau, Tourism Promotion Division URL: <http://www.pref.miyazaki.lg.jp/>

## VISIT MIYAZAKI BUS PASS



One-day pass for unlimited travel on public buses for foreign visitors

[For more info]



1 pass

JPY 1,000yen



# DiGJAPAN!

Free App



- Sightseeing and shopping information
- Offline viewing is possible once downloaded
- Schedule for each bus stop is available